

### smd series V560-10

- 10MHz ~ 1GHz
- hermetically sealed smd case
- sine wave, CMOS output
- wide pulling range
- good linearity

#### Applications:

- communications equipment
- instrumentation
- portable systems



#### Standard options:

<b>frequency range:</b>	_____ 10MHz ~ 1GHz _____		
<b>accuracy codes:</b>	_____ (A) _____	_____ (B) _____	
temperature tolerance	±10ppm	±20ppm	
temperature range	(0 +50)°C	(-20 +70)°C	
<b>output codes:</b>	_____ (S) _____	_____ (L) _____	
output	sine wave, 0dBm into 50Ω harmonics -30dBc max.	CMOS 15pF, 45% ~ 55% <2ns max. rise and fall	
<b>supply voltage codes:</b>	_____ (V1) _____	_____ (V2) _____	_____ (V3) _____
supply voltage	+3.3Vd.c.	+5.0Vd.c.	+12.0Vd.c.
control voltage V <sub>c</sub>	(+1.5 ±1.5)Vd.c.	(+2.25 ±2.25)Vd.c.	(+2.25 ±2.25)Vd.c.
voltage control range	±100ppm max.*	±200ppm max.*	±300ppm max.*
	*control range is frequency dependent		

#### Generic specification:

<b>stability:</b>	
ageing long term	±2ppm max. first year
control range linearity	±10%
control voltage input impedance	100KΩ min.
<b>power supplies:</b>	
supply current	50mA typical
insulation resistance	500MegΩ min., 100Vd.c.
<b>temperature:</b>	
operating range	(0 +50)°C
storage range	(-40 +125)°C
	(-20 +70)°C
	(-40 +125)°C

### Environmental conditions:

**mechanical shock:** MIL standard 202F, method 213, condition J

**thermal shock:** MIL standard 202F, method 107, condition A

**vibration:** MIL standard 202F, method 204, condition B

**solderability:** 5 seconds max. at +230°C, 3 seconds max at +350°C

### Marking:

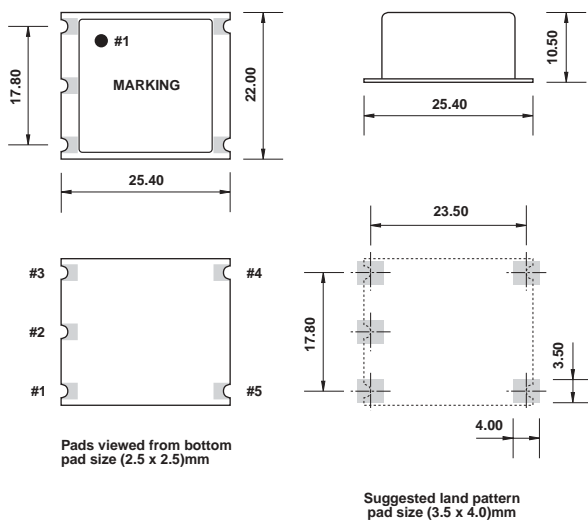
frequency, date code, serial number on high temperature metalised polyester label

### Ordering code:

**standard options:** **V560-10 A S V2 - 155.52M**  
**V560-10** = series generic code  
**A** temp. tol. and temp. range code: **A = ±10ppm(0 +50)°C**  
**S** output code: **S = sine wave output, 0dBm into 50Ω**  
**V2** supply voltage code: **V2 = +5Vd.c. supply**  
**155.52M** output frequency: **155.52M = 155.52MHz**

**custom specification:** part number issued with custom specification and drawing

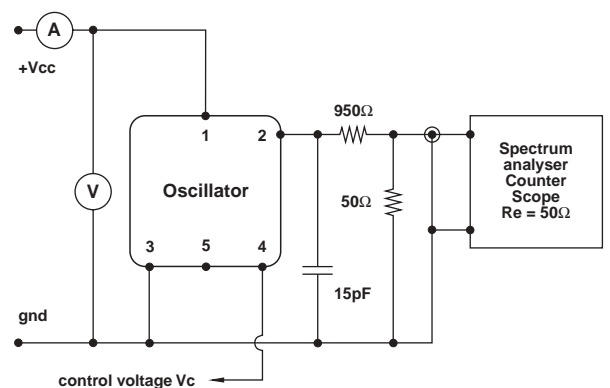
### Dimensions(mm):



### Pin connections:

- #1 +V<sub>cc</sub>
- #2 output
- #3 ground/case
- #4 control voltage V<sub>c</sub>
- #5 n.c.

### Test circuit, CMOS load:



Test circuit includes a 20:1 step down into a matched 50Ω load